

# City Update 2018

Friends of the Library

SH 146

April 24, 2018

# Highlights

- SH 146 Updates
  - Website SH 146.com
  - ROW Acquisitions
  - Demolitions
  - Letting Date
  - Phase I Construction Timeline
  - Design Enhancements
- Economic Development Updates
  - Business Incentives by EDC
  - What is EDC Doing for New Businesses?
  - Business Relocations
  - Coming Soon...

# SH146.com

## What's Going On?

Blog Style Now

Construction Updates

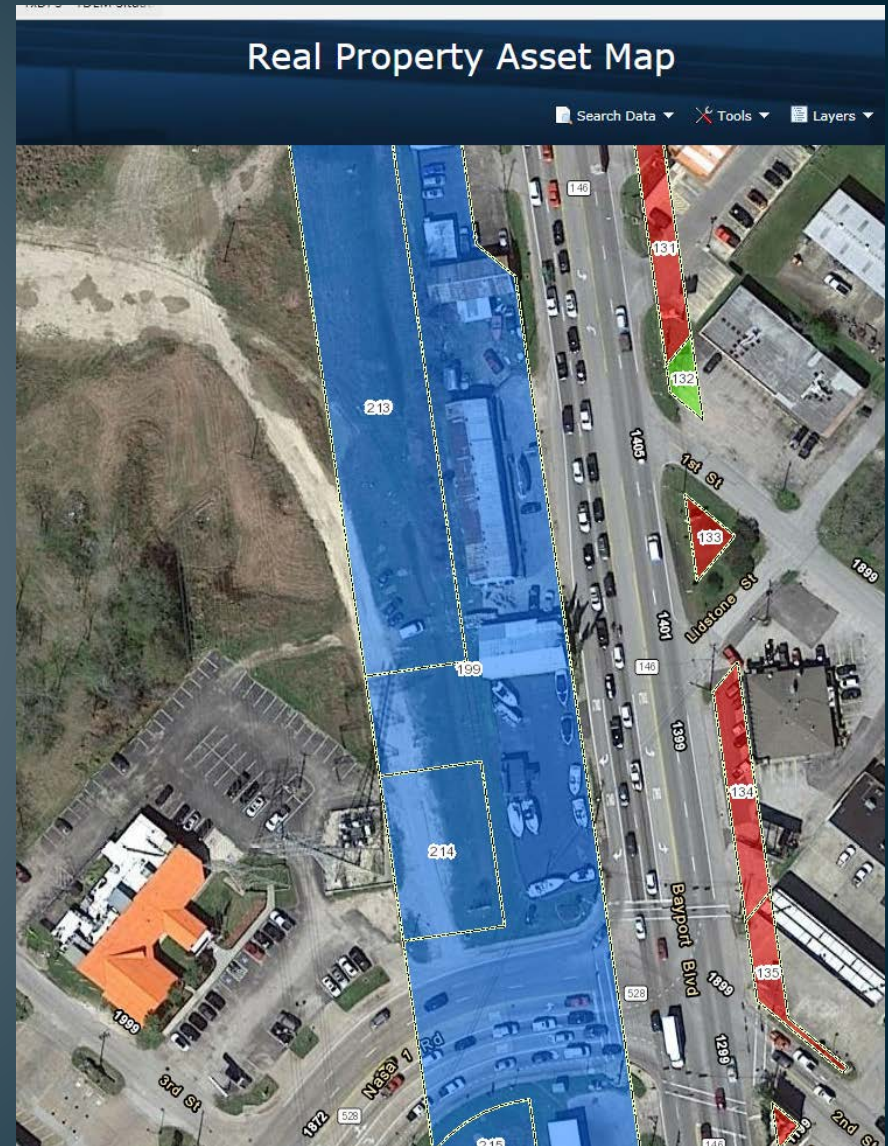
Coming Soon Announcements





# ROW Acquisition

- TxDOT Website- Search:
  - TxDOT Real Property Asset Map
- 53 Businesses affected
- 92 Total Parcels to be acquired
- East – Priority for Utility
- West – Closings in Process
- Union Pacific – CLOSED
- Pipelines have negotiated relocation easements with Centerpoint



# Demolitions

- KFC/Taco Bell - Complete
- Popeye's - Complete
- Sonic – Complete
- Texaco – Pending Tank Removal
- Walgreens – Pending
- Enterprise – Pending
- Laredo's – Pending





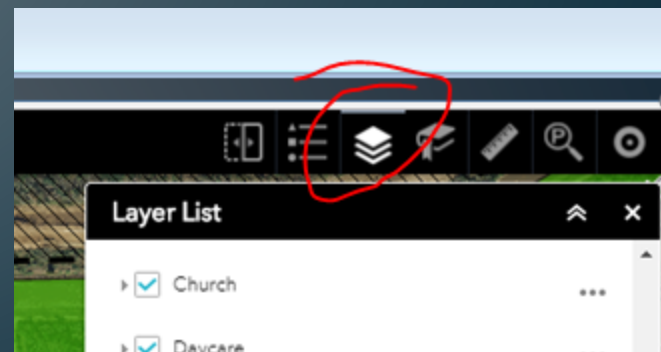
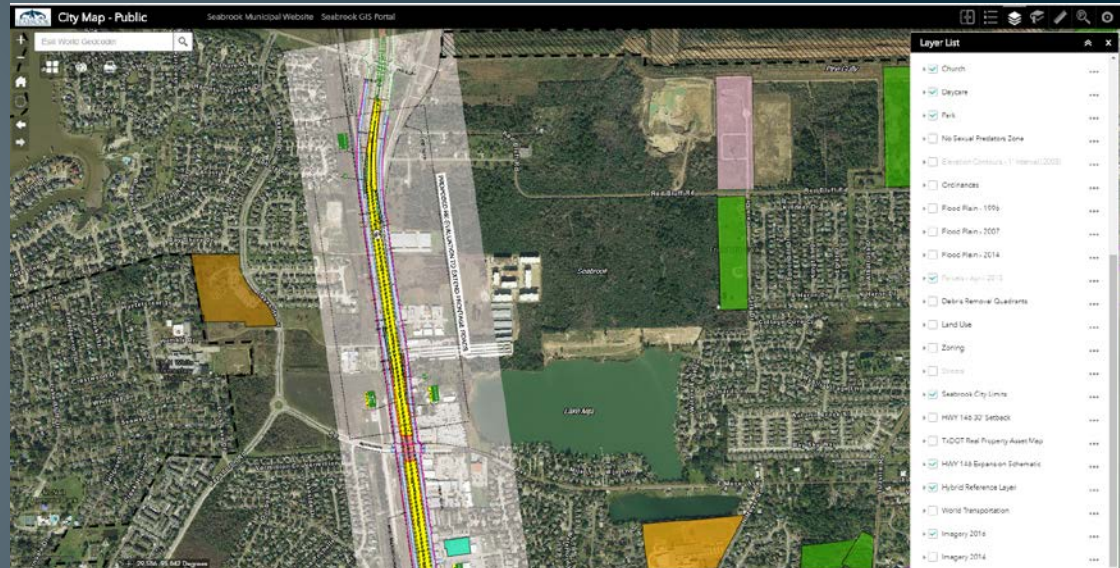
# City Public Map – SH 146 Layer

Visit

[www.seabrooktx.gov/gis](http://www.seabrooktx.gov/gis)

GIS (Geographic Information System) Mapping Technology

- Click on Public Map
- Click on icon on top right for layers
- Scroll down for SH146 Schematic



# Letting Date: When Will This Start !?

- The Project has officially been let and is online
- **May 2, 2018 Opening**
- Contract Letting
- August – September 2018
  - Phase 1 Starts

CCSJ: 0389-05-116			
District:	HOUSTON	Let Date:	May 2018
Highway:	SH 146	Let Status:	Approved
Project ID:	NH 2018(852)	CSJ:	0389-05-116
Description:	WIDEN TO 6-LANES WITH 4-LANE EXPRESS LANES	Handling Code:	
Limits From:	NASA 1	Fund Cat:	2M
Limits To:	HARRIS/GALVESTON COUNTY LINE	ESTIMATE:	\$75,532,582
Length:	1.0	Actual	\$0
District:	HOUSTON	Let Date:	May 2018
Highway:	SH 146	Let Status:	Approved
Project ID:	NH 2018(852)	CSJ:	0389-05-088
Description:	WIDEN TO 8-LANES, GS AT MAJOR INTERSECTIONS AND 2 2-LANE	Handling Code:	
Limits From:	RED BLUFF	Fund Cat:	2M
Limits To:	NASA 1	ESTIMATE:	\$53,416,830
Length:	2.0	Actual	\$0
District:	HOUSTON	Let Date:	May 2018
Highway:	SH 146	Let Status:	Approved
Project ID:	NH 2018(852)	CSJ:	0389-06-095
Description:	WIDEN TO 6 LANES WITH 4-LANE EXPRESS LANES	Handling Code:	
Limits From:	HARRIS/GALVESTON COUNTY LINE	Fund Cat:	2M
Limits To:	FM 518	ESTIMATE:	\$65,499,541
Length:	0.9	Actual	\$0
<a href="#">Proposal Request</a> <a href="#">List Showing Order</a> <a href="#">Bid List</a> <a href="#">Back...</a>			<b>Totals for 0389-05-116</b> Length: 3.9 Estimate: \$194,448,953

# Construction Timeline

- Phase I – Construction (12-18 months)
  - Traffic Control
    - Barriers set up in center lane
  - Bridge
    - Widen the existing bridge
  - Utility Relocations - City Utilities
    - Water Line Relocate – East
    - Sewer Line Relocate - East
    - Force Sewer Main Line Relocate – West
  - Franchise Utility Relocations
    - \$4.4 million City Funds



# SH 146

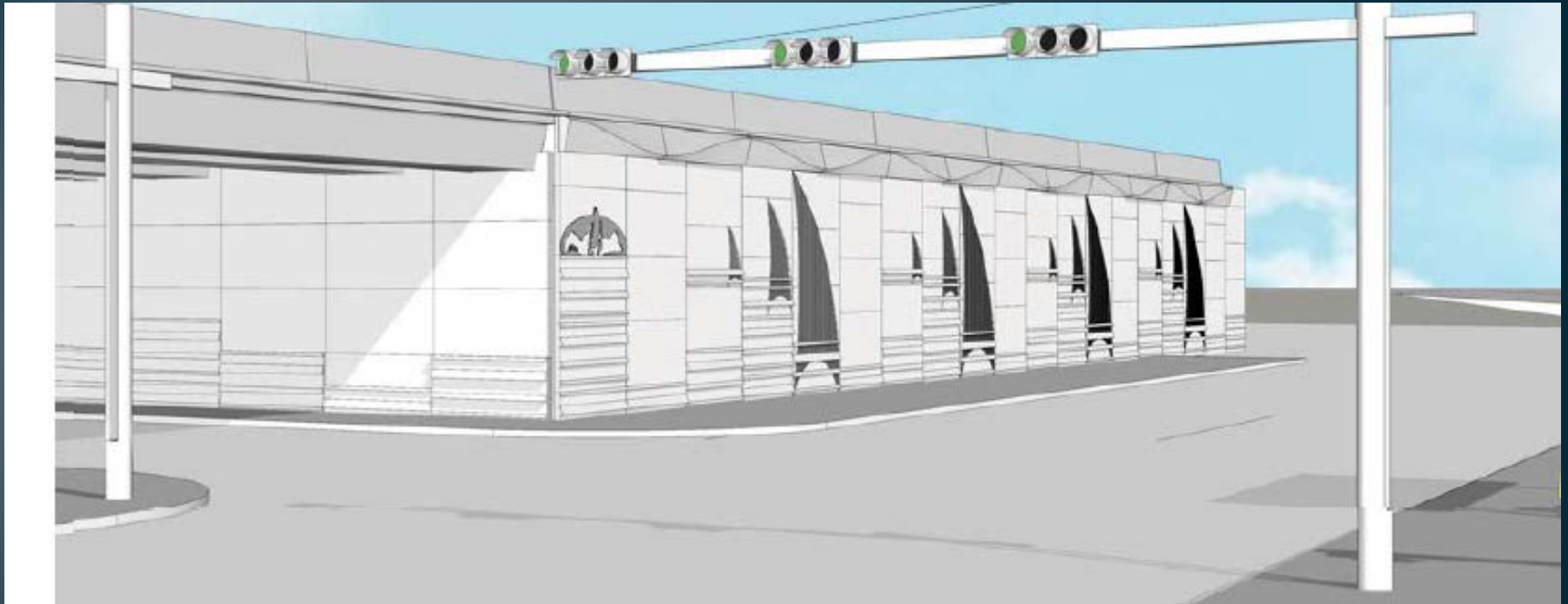
- Highway Enhancements and Branding
  - MSE Walls – Sailboat Design
  - Branding - City Seal Insert on MSE Wall
  - Trees, Landscaping and Pavers
  - Nautical Bollards
  - Rip Rap at NASA and SH 146
    - Not only a design element but to deter any illegal activity under overpasses
  - Traffic Signal Poles Powder Coated
  - Conduit work for lighting package for underpasses
    - (TxDOT contract item, but will prepare for future city projects for speciality lighting)
  - Backlit Star Medallions

TxDOT will expend approx \$2.3 million for enhancements

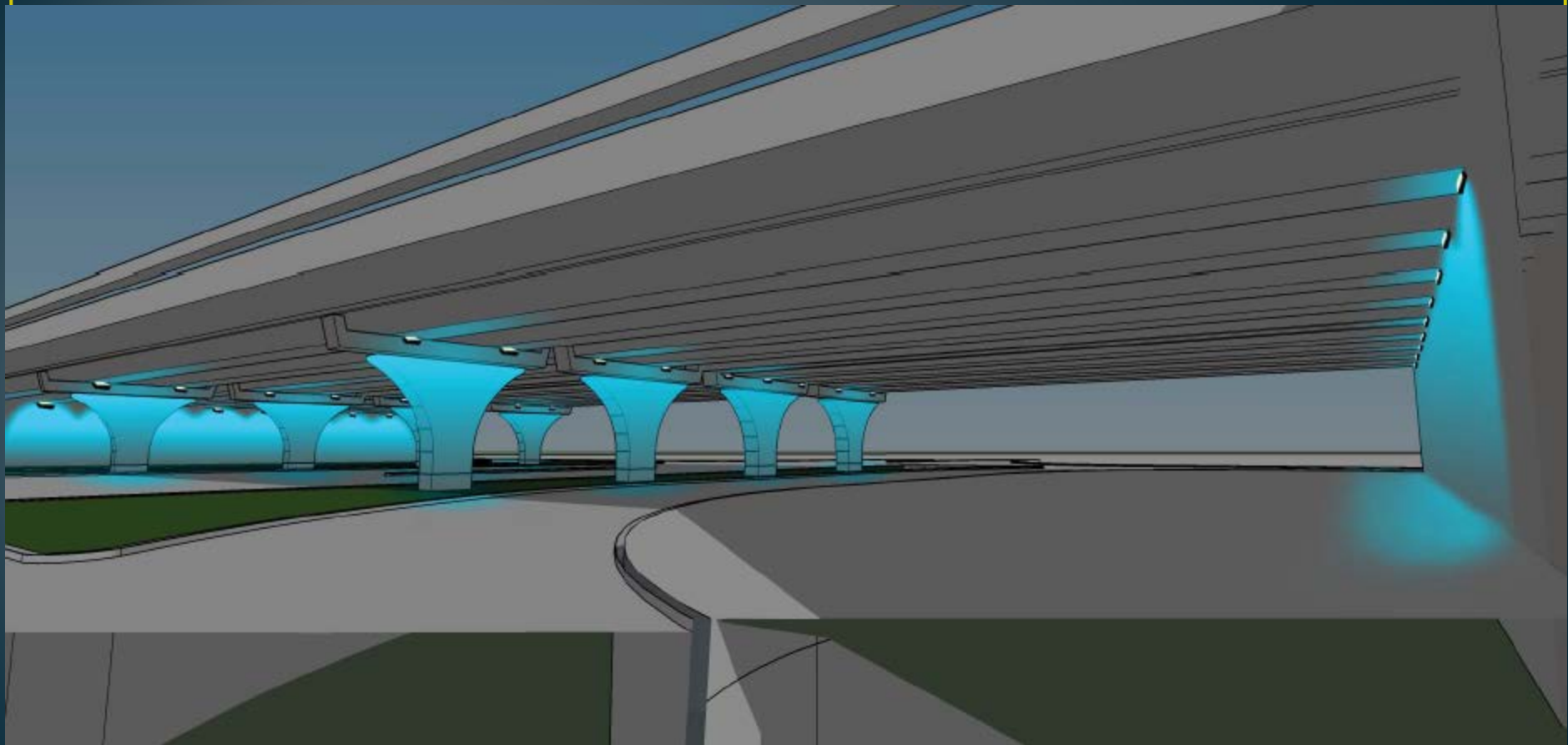
City portion to expend through EDC funding approx. \$1.1 million for enhancements

- Total \$3.4 million of Aesthetic Enhancements









# Red Bluff Expansion

- ~~Start Q3 2018~~
- \$15 million
- 1.5 miles

**Update 4-27-18: Project Delayed**  
**Start anticipated Q3 2019**



# Red Bluff

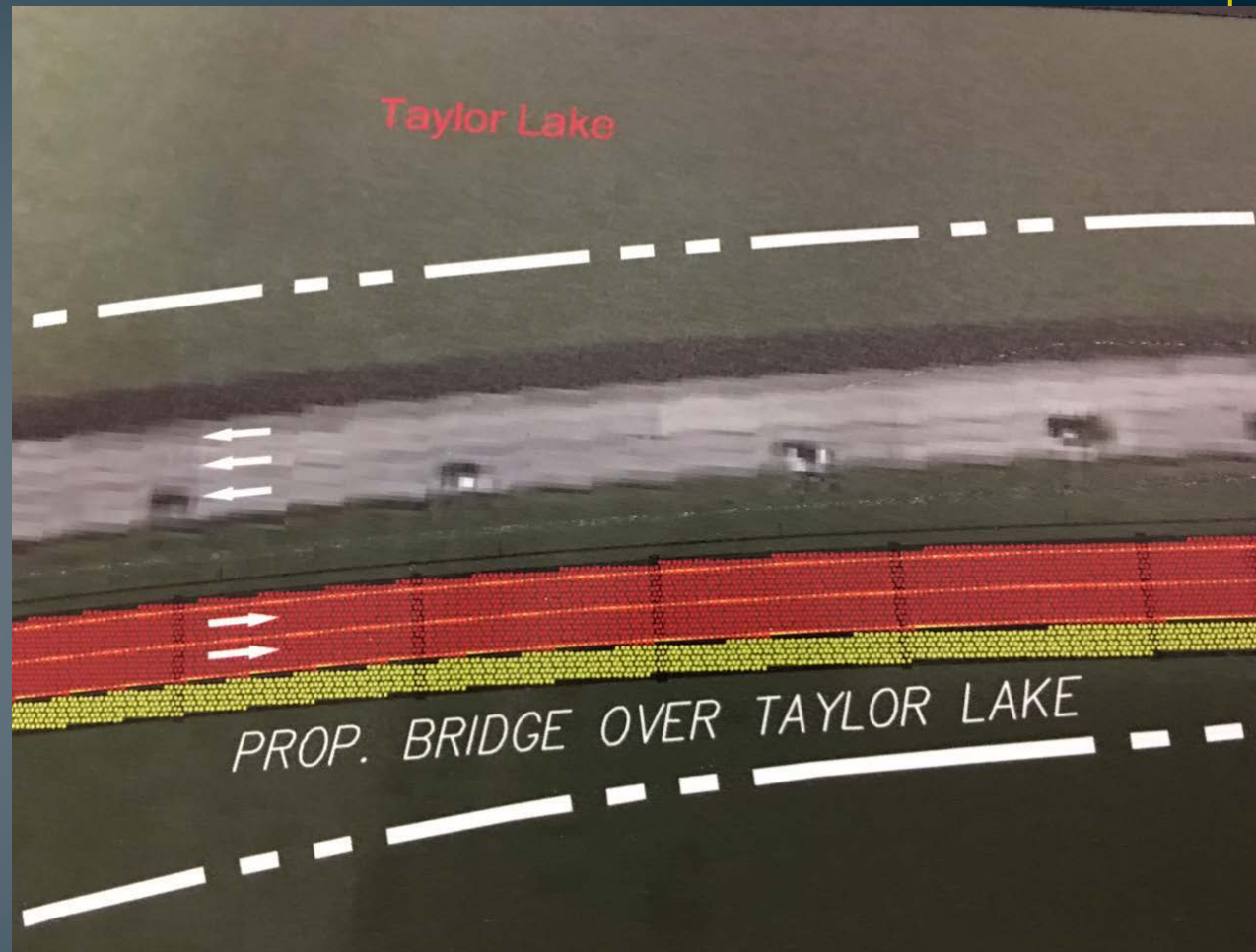
- Convert existing roadway to three lanes of westbound





# Red Bluff

- New Parallel bridge south of existing bridge - eastbound



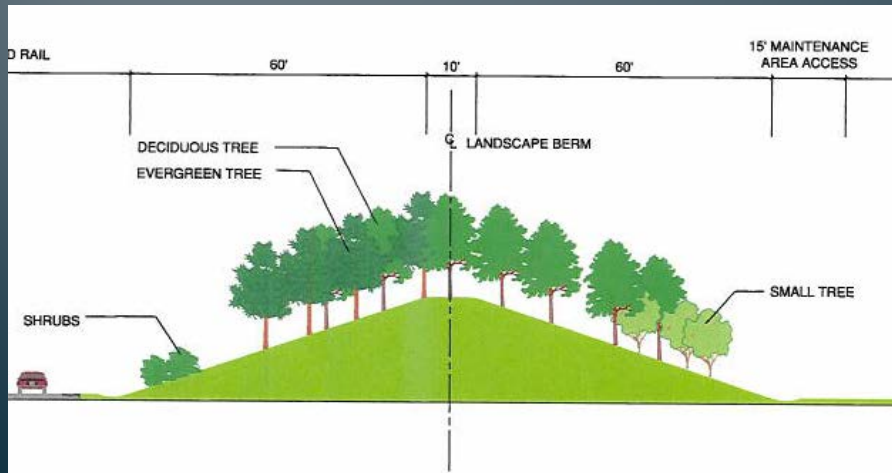
# Red Bluff

- 10 foot wide shared use trail on bridge and up to SH 146



# Port Projects

- Rail Spur Construction
  - Q3 2018 – 2019
  - 3 at grade crossings
  - Quiet Zones approved
- Berm Planting



Port Of Houston Middle Berm

Image # 16011 6045  
Rev. Date - 01/11/2016





# SH 146 Businesses - Relocations

- AutoZone
- Benjamin's Automotive
- CVS
- Enterprise Rent A Car
- Fatty's
- Hill's Liquor
- Mario's Pizza
- Ryan's Cleaners
- Seabrook Flowers

# SH 146 Relocations



The Seabrook Economic  
Development  
Corporation Director  
and board work very  
closely with city  
businesses for  
incentives to stay  
while also recruiting  
for new franchises  
along corridor.

Laredo's Tex Mex  
Mattress Inc  
Maximum Scuba  
Neptune Subs  
Sonic  
Taco Bell / KFC  
Tookie's Burgers  
Walgreen's  
Wells Fargo



# Franchises

Many franchises are being pursued and the Economic Development Corporation meets with representatives interested in the Seabrook area to provide demographic information needed to evaluate site selection.

Just some of the businesses with site selectors interested in Seabrook:

Schlitzsky's

Smoothie King

Sonic

Starbucks Coffee Company



# Coming Soon!!!

- Brew Pub (Old Seabrook)
- Coffee and Dessert Shop (Old Seabrook)
- Hubcap Grill (NASA Parkway)
- Gourmet Sandwich Shop (Old Seabrook)
- Merlion (Old Seabrook)

# Recruitment

- The City's Marketing Director works with the Economic Development Director through a series of campaigns to keep active information in front of developers and brokers.

Receive ONLY the emails you want!  
Update Email Preferences Here >>

View Google Map

Print / View Flyer

Reply to Sender

Forward to Associate

## Your Grocery Store Belongs in Seabrook

CVS PHARMACY & AUTOZONE COMING SOON TO SEABROOK TOWN CENTER.



- ★ Highway frontage
- ★ Retail & dining pad sites
- ★ Over 75,000 daily commuters
- ★ Economic Incentives
- ★ Over 3 million yearly tourists
- ★ Waterfront Community

SCHEDULE  
a meeting  
TODAY

281.291.5730  
seabrooktx.gov/edc




DISTANCE  
30 minutes  
to Houston

	<b>78,172</b> 2018 Estimated Primary Retail Trade Area Population		<b>\$121,362</b> Average Household Income	<b>\$90,557</b> Median Household Income	<b>\$47,730</b> Per Capita Income		<b>12.9%</b> Graduate Degree or Professional	<b>25.6%</b> Bachelor's Degree	<b>34%</b> Associate's Degree or Some College
--	--	--	--	--	---	--	---	--------------------------------------	--

REDMail

by REDNews

**Start Sending REDMail Today!**  
 Reach 100,000+ QUALIFIED CRE Professionals

REDNews magazine is distributed to Over 100,000 QUALIFIED CRE Investors, Brokers and End Users Each Month!  
 To subscribe free click [here](#). For a preview, view the latest issue of REDNews magazine in digital format [here](#).

[www.REDNews.com](http://www.REDNews.com) | 
 [713.661.6300](tel:713.661.6300) | 
 [800.836.2191](tel:800.836.2191) | 
 [E-mail Preferences](#)





Thank You