



CITY OF SEABROOK

Friends of the Library
2019 Annual Meeting

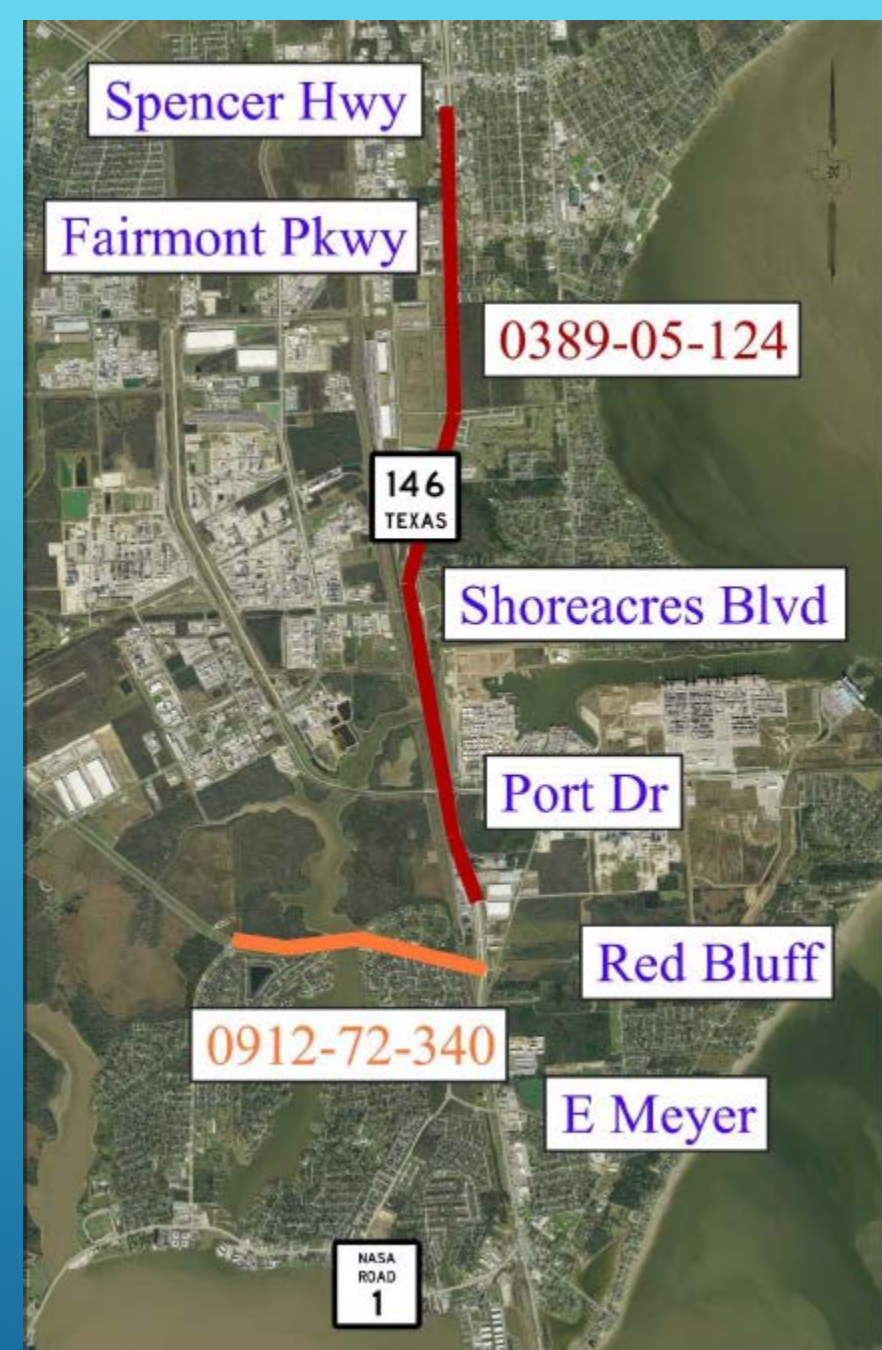
SH 146 EXPANSION SEABROOK - KEMAH

- Seabrook to Kemah
- Widen from 4 lane with center turn lane to 6 lanes with 4 lane express lanes and (2) 2 lane frontage roads
- Construction Cost \$201 million
- Intersection overpasses at Repsdorph and NASA Parkway will be constructed
- Future connection for Grand Parkway
- Approximate construction term 5 years



SH 146 EXPANSION SEABROOK – LA PORTE

- Seabrook to La Porte
- Widen from 4 lane with shoulder to 6 lanes with 2 2-lane frontage road
- Construction Cost \$42 million



PROJECT PHASING

Phase 1: (18 months duration*)

Widen existing NB Clear Creek bridge and build new **NB Frontage Road in Seabrook**

Phase 2: (24 months duration*)

Widen existing SB Clear Creek bridge, build new SB Frontage Road, and build majority of new Express bridge

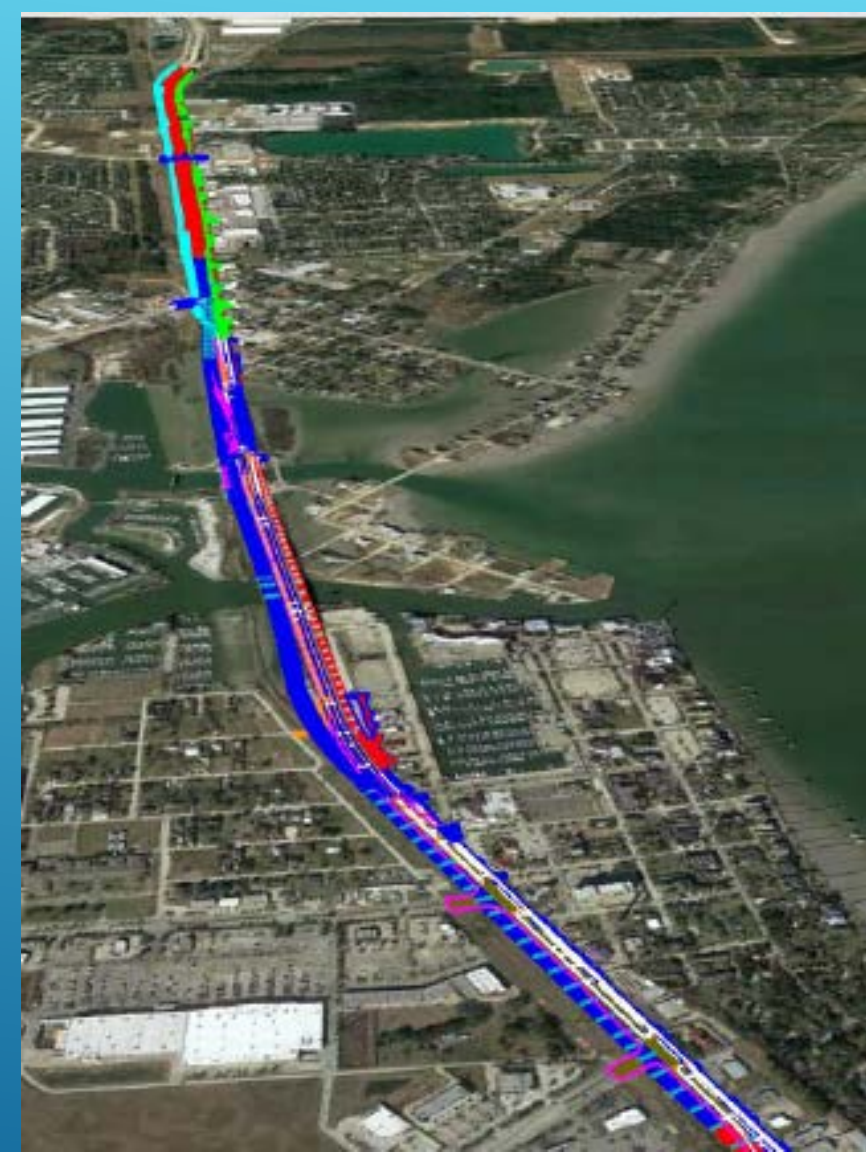
Phase 3: (12 months duration*)

Reconstruct and elevate existing SH 146 mainlines and build new NB Frontage Road in Kemah

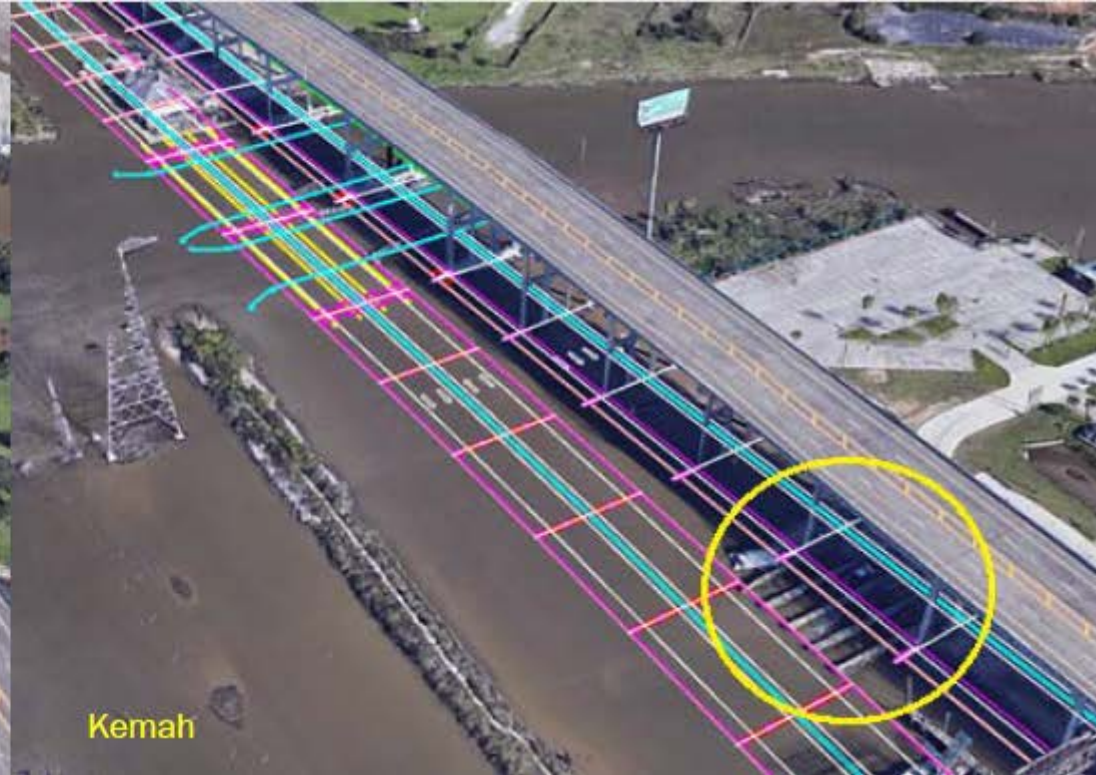
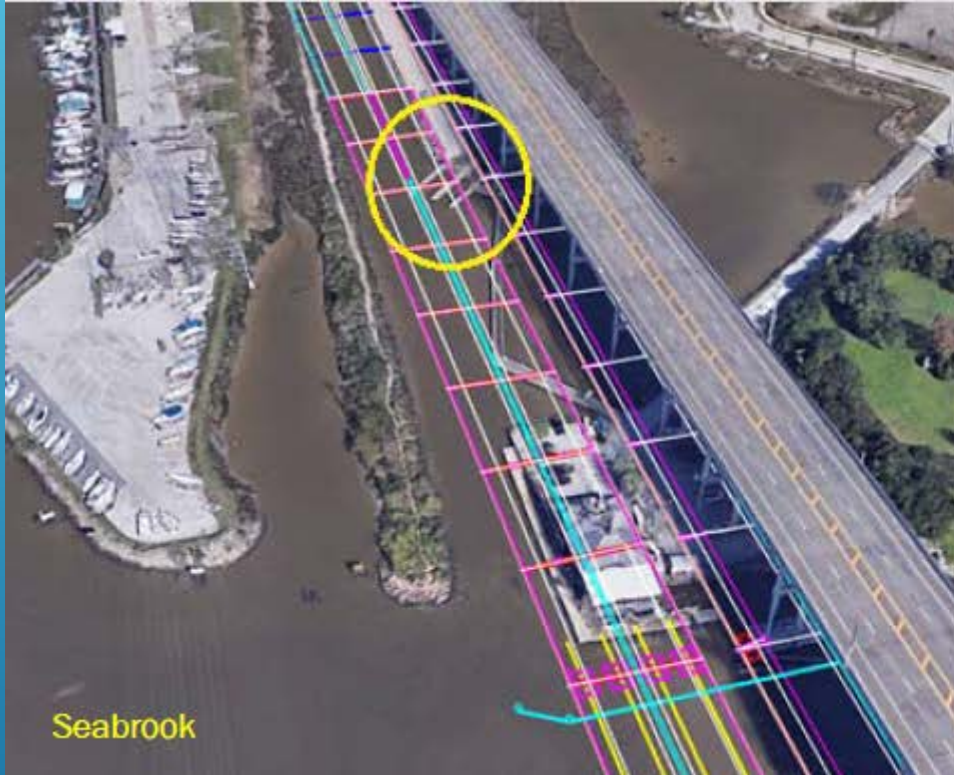
Phase 4: (6 months duration*)

Finish new Express bridge, finish SB Frontage Road in Kemah

* Phase durations are per designer estimations and are subject to change during construction



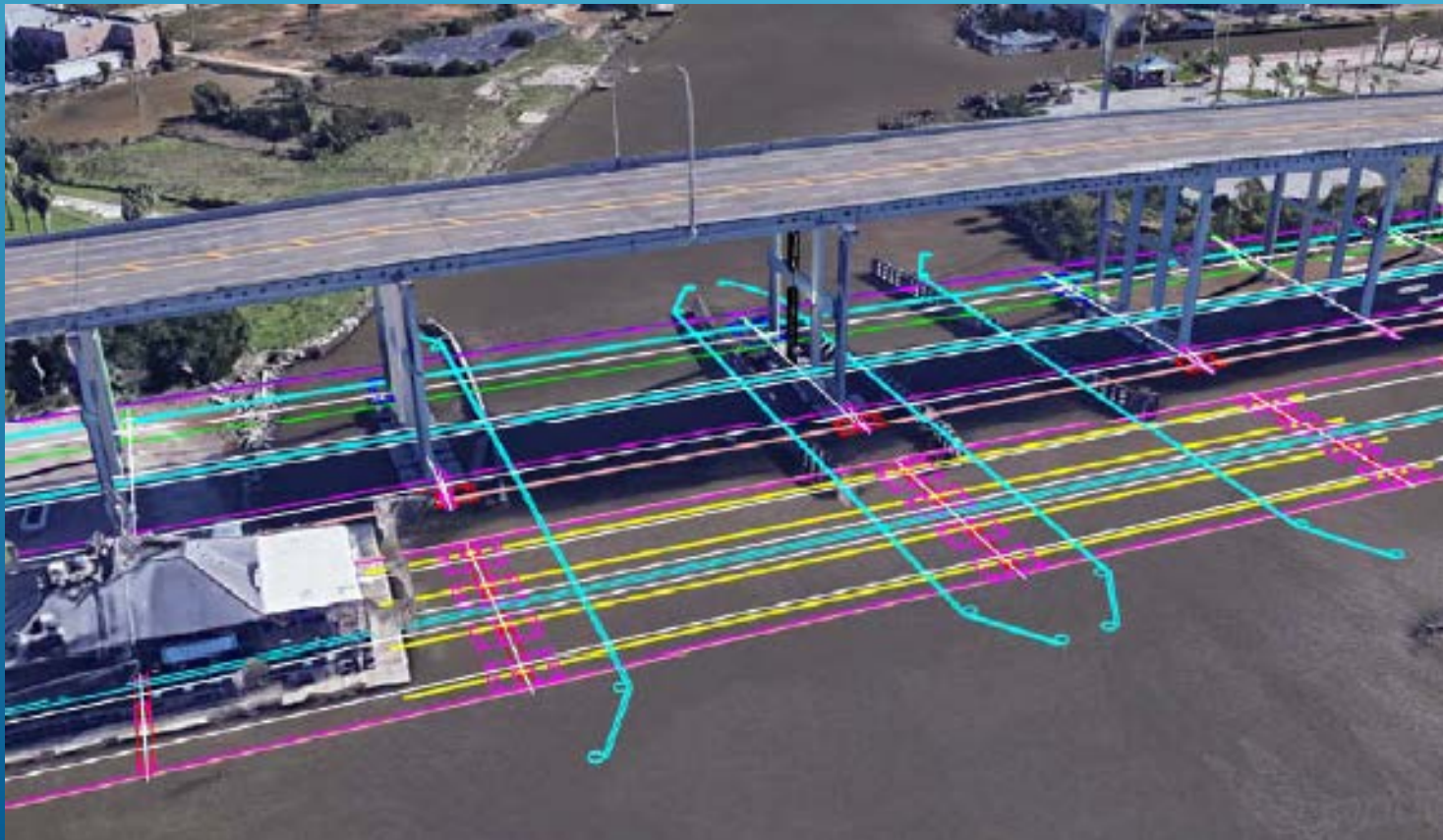
BOAT RAMP AND ACCESS

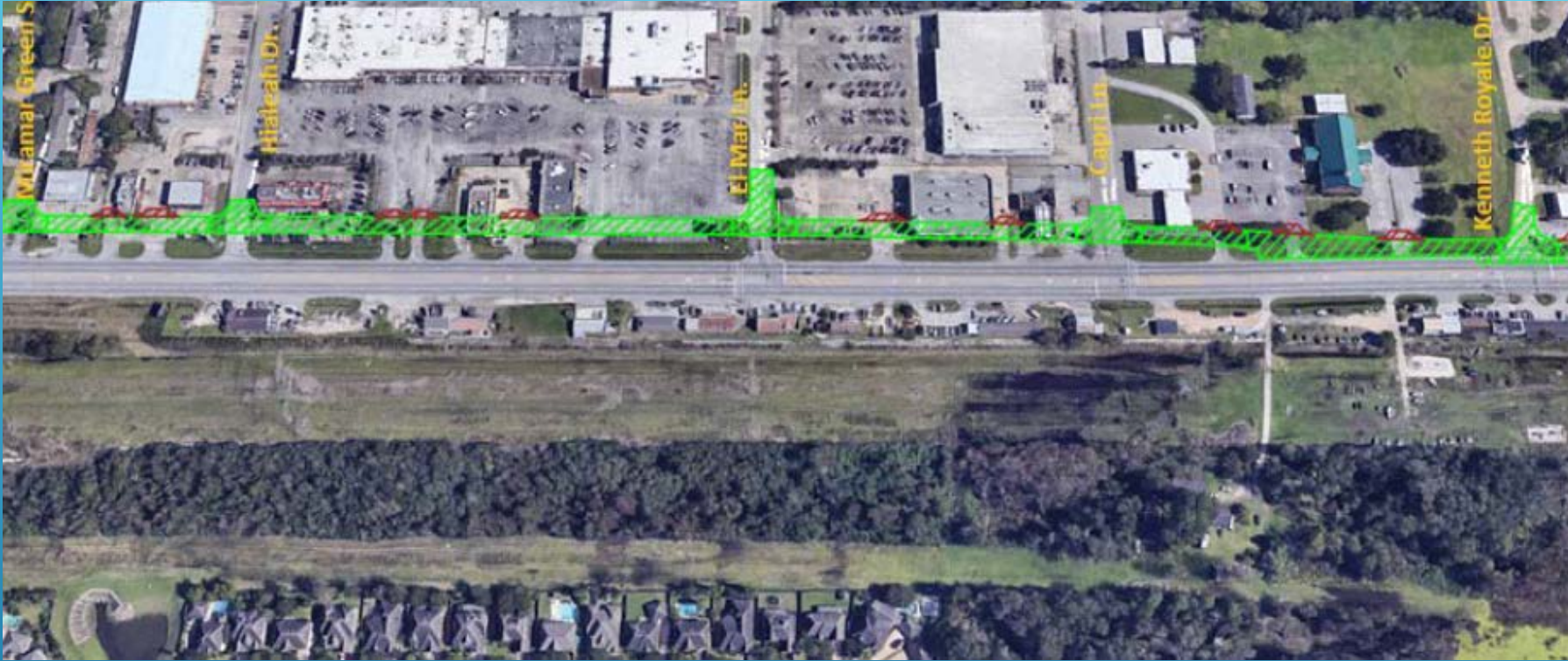


- Vertical clearance for marine traffic will remain unchanged at 73 feet
- Inbound /Outbound access won't be closed simultaneously

SUB-STRUCTURE FOUNDATIONS

- 918 Concrete Piles
- Anticipated pile lengths 53 to 83 ft





FRONTAGE ROAD

Includes new subgrade, drainage, utilities,
and frontage road



DEMOLITION CONTINUES

UTILITY RELOCATIONS

133 known existing utility conflicts

All utilities will be moving from existing locations to new locations within new ROW or into utility easements

This includes 7 major gas line adjustments



- ▶ SH 146.com
- ▶ www.houstontranstar.org

COMMUNICATION

A decorative graphic consisting of several parallel white lines of varying lengths, slanted diagonally from the bottom right towards the top right, set against a blue gradient background.

April 11, 2019

Waffle House Demolition

Demolitions

Demolition has started for the Waffle House, previously located at 2102 Seabrook Circle. Per TXDOT, demolition should be completed within two weeks. The Waffle House is currently scouting new sites in the City for relocation!



New Beginnings

Current Updates

TxDOT has created work zones on the Clear Creek Channel Bridge. These work zones have shifted traffic on the Clear Creek Channel Bridge to the west with two lanes in each direction. Barriers currently separate north and south bound traffic. Additional traffic updates are listed below as TxDOT moves forward with Phase 1; widening the northbound lanes on the Clear Creek Channel Bridge and building a new northbound frontage road in Seabrook.



Kemah Free Event Parking and Shuttle for Easter Weekend

The City of Kemah will be offering free event parking with shuttle service to and from the Kemah Crawfish Festival on Friday, April 19 through Sunday, April 21.

[Read More →](#)

Apr 18, 2019



Additional Patrol on Seabrook Waterfront for Good Friday

Motorists can expect traffic congestion around Waterfront on Friday, April 19. Seabrook Police will have an additional seven officers on duty to assist with traffic control.

SH 146.COM

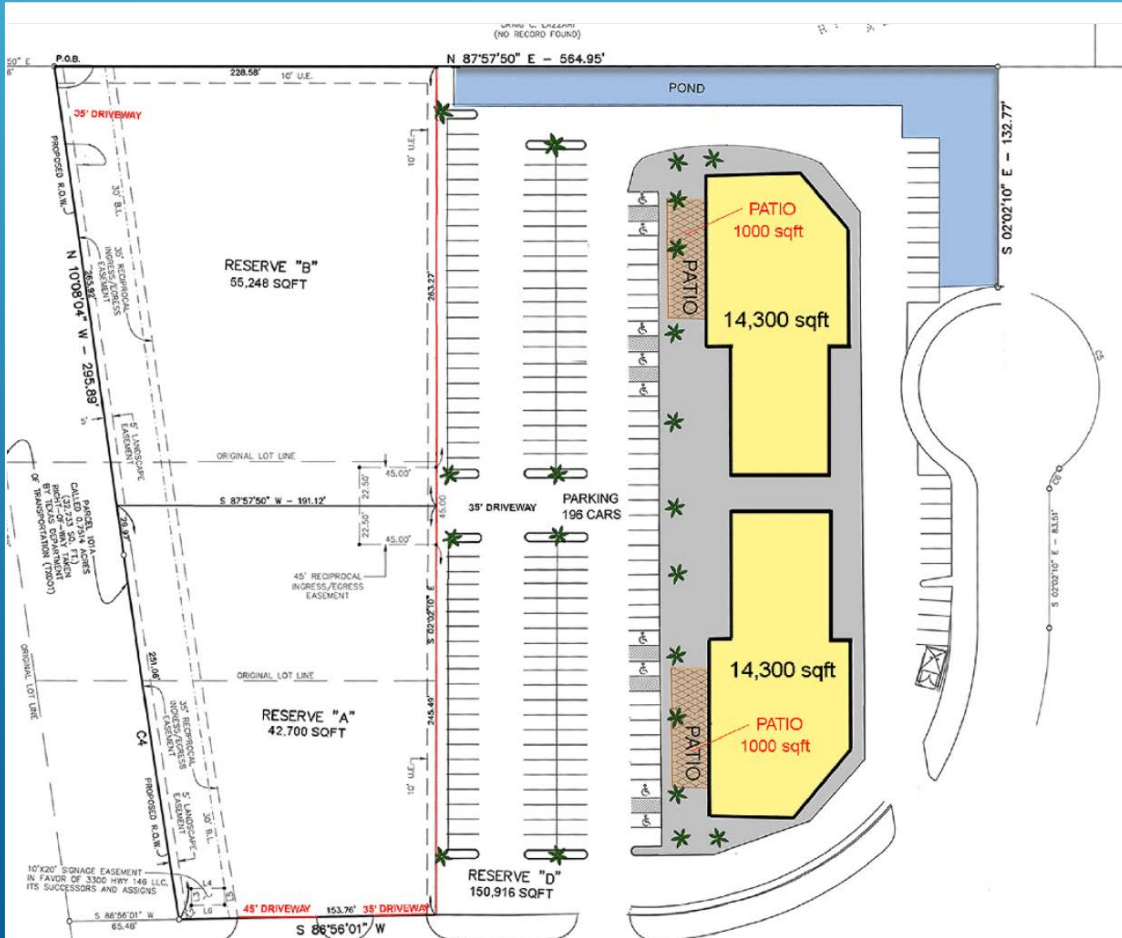


RELOCATIONS

REDEVELOPMENT



NEW DEVELOPMENTS

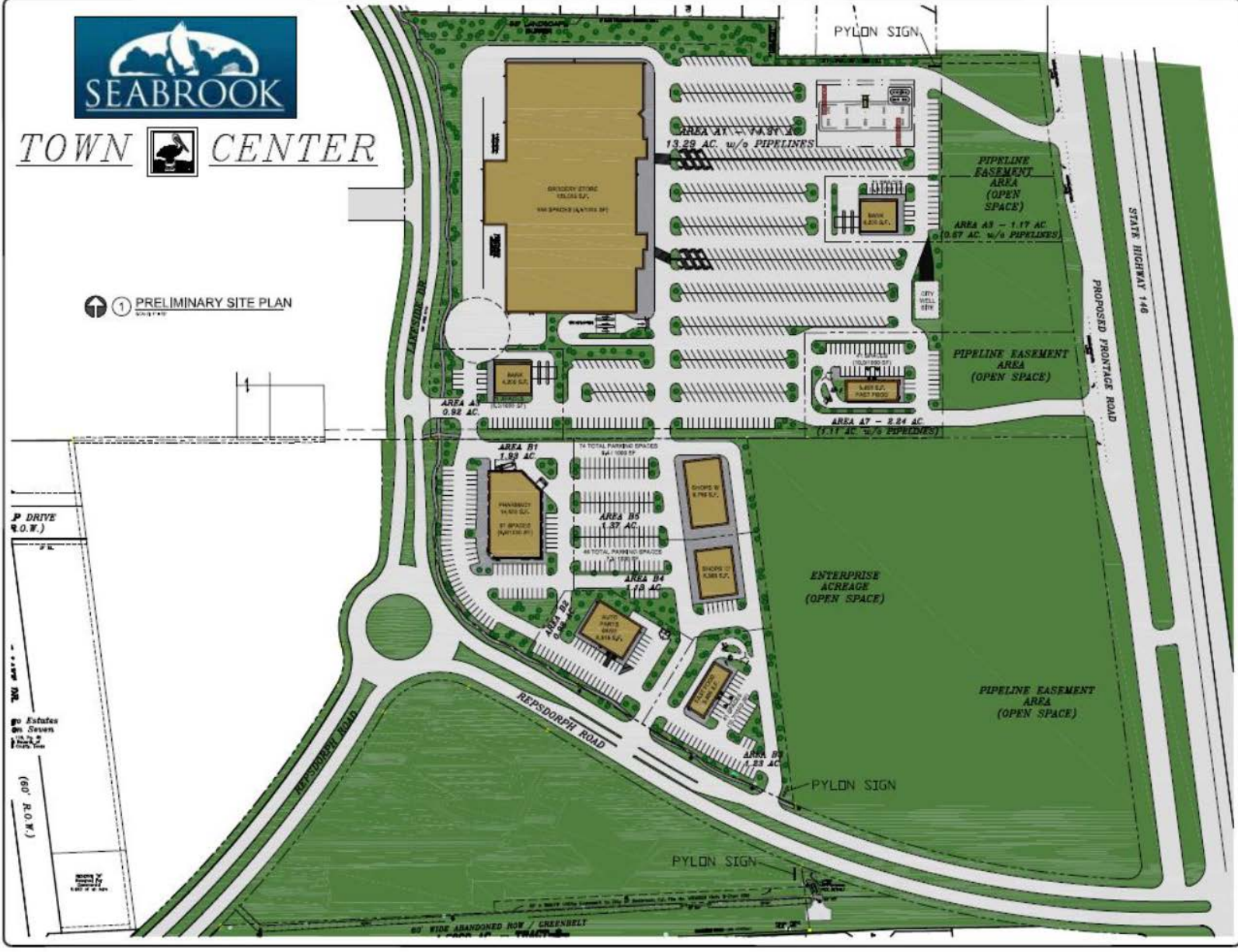


THE COMMONS



TOWN CENTER

1 PRELIMINARY SITE PLAN



SEABROOK TOWN CENTER

New Holiday Inn Express & Suites Seabrook, TX





LUXURY SENIOR COMMUNITY



SEASIDE RV RESORT AND CABANAS



▶ https://www.youtube.com/watch?v=J3h_i09dJFE

ECONOMIC DEVELOPMENT
CONTINUES

