



CITY UPDATE

Friends of the Library
April 29, 2025





Thom Kolupski, Mayor

Jackie Rasco, Position 1

Rob Hefner, Position 2

Tom Tollett, Position 3

Michael Giangrosso, Position 4

Buddy Hammann, Mayor Pro Tem, Position 5

Joe Machol, Position 6



Election Day

May 3, 2025

- Mayor
- 4 Council Positions
- 2 Bond Propositions
- 12 Charter Review

Infrastructure



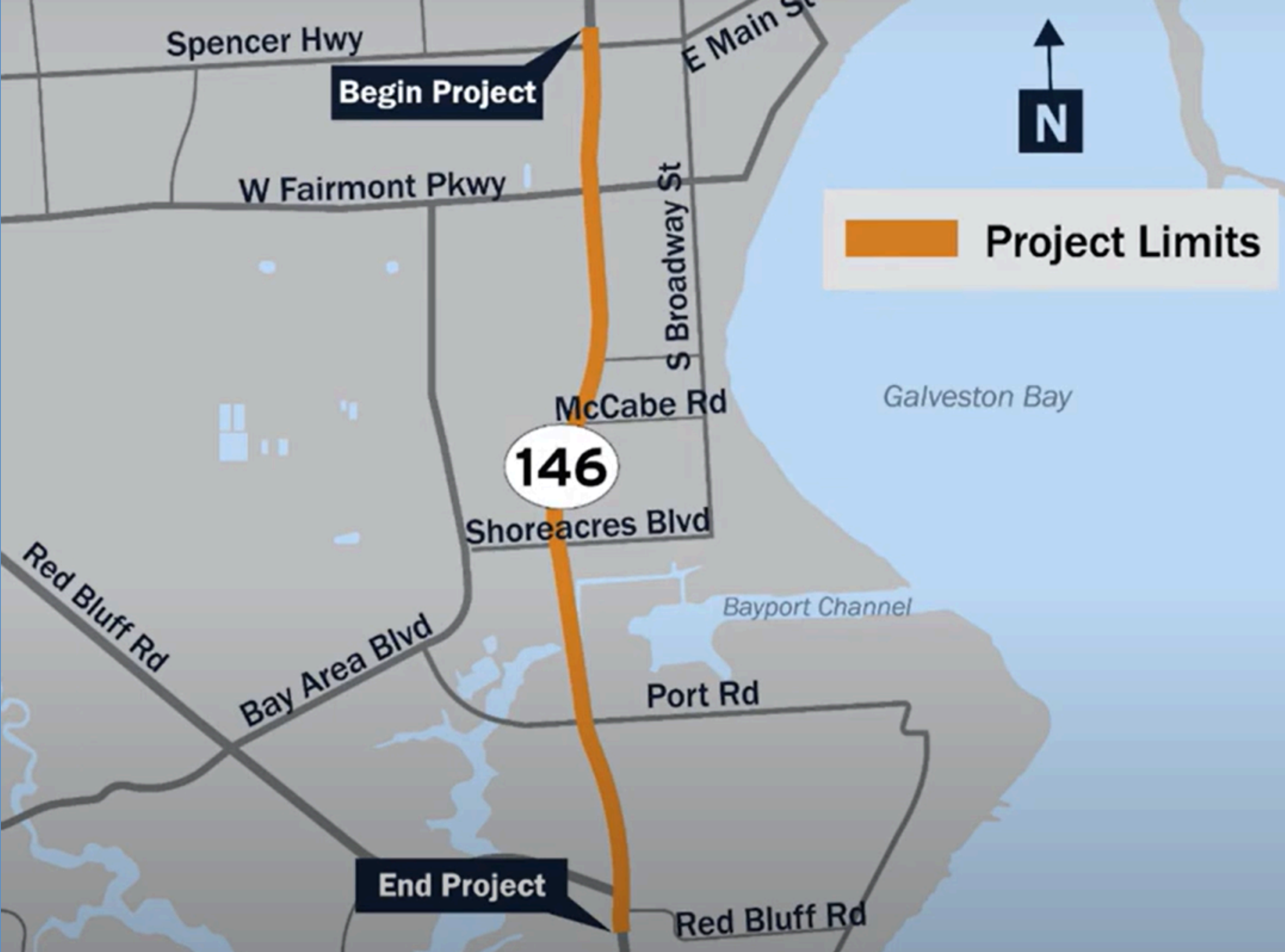
- Improved traffic flow and safety
- New overpasses and signalized intersections
- Enhanced pedestrian and bicycle access in specific zones
- Updated utility and drainage infrastructure

SH 146 Project (2019)

THE LONG-AWAITED STATE HIGHWAY 146 EXPANSION PROJECT THROUGH SEABROOK IS NOW SUBSTANTIALLY COMPLETE!



But, wait....



TXDOT



OLD SH 146
EXPANSION

3 LANES
EASTBOUND

3 LANES
WESTBOUND

RED BLUFF

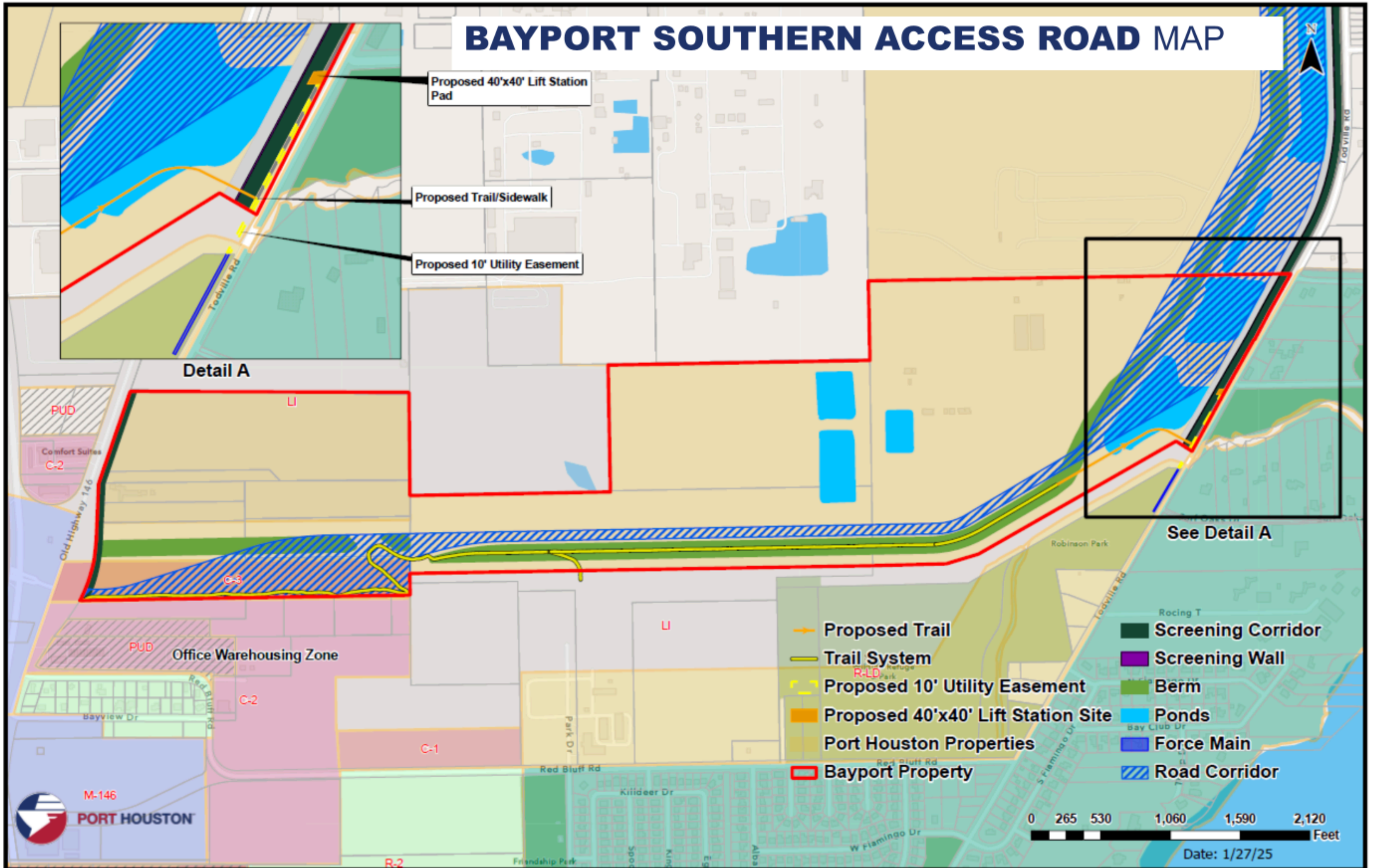
2 LANES
NORTHBOUND

2 LANES
SOUTHBOUND

TX DOT PROJECT WITH THE RED BLUFF TO SPENCER
PHASE 2025-2026



BAYPORT SOUTHERN ACCESS ROAD MAP



BOAT RAMP

Concrete Sidewalk

Roadway to Ramp

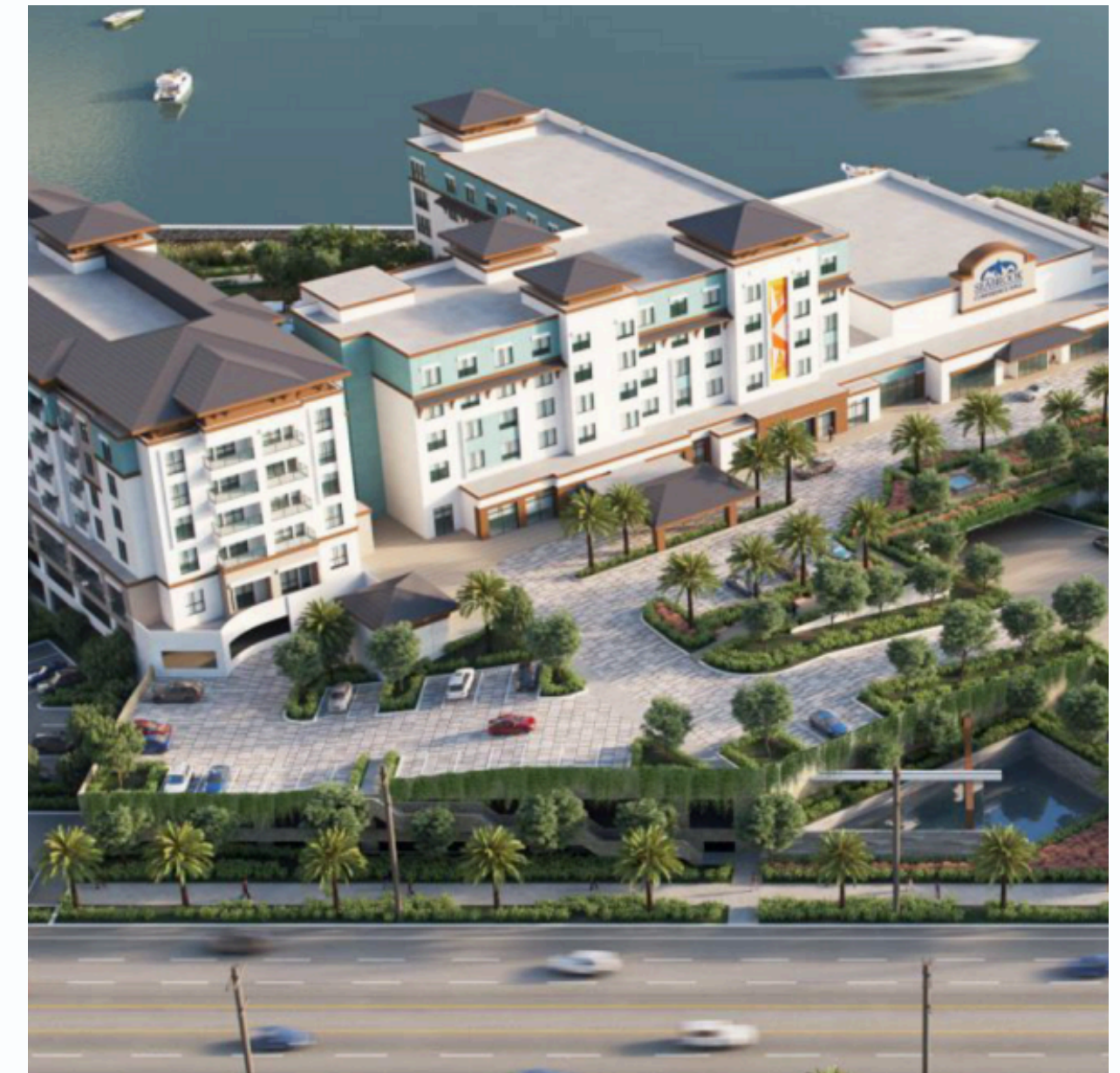
Ramp

Developments

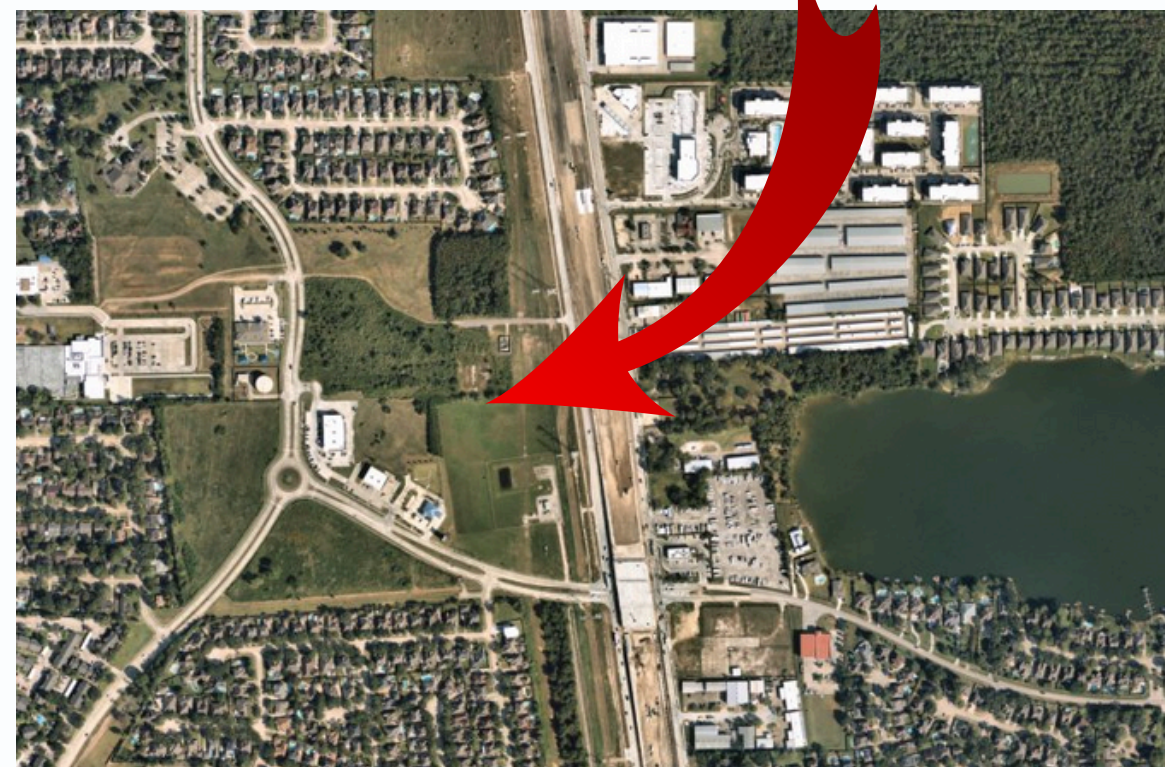
Seabrook Plaza

Planned Unit Development

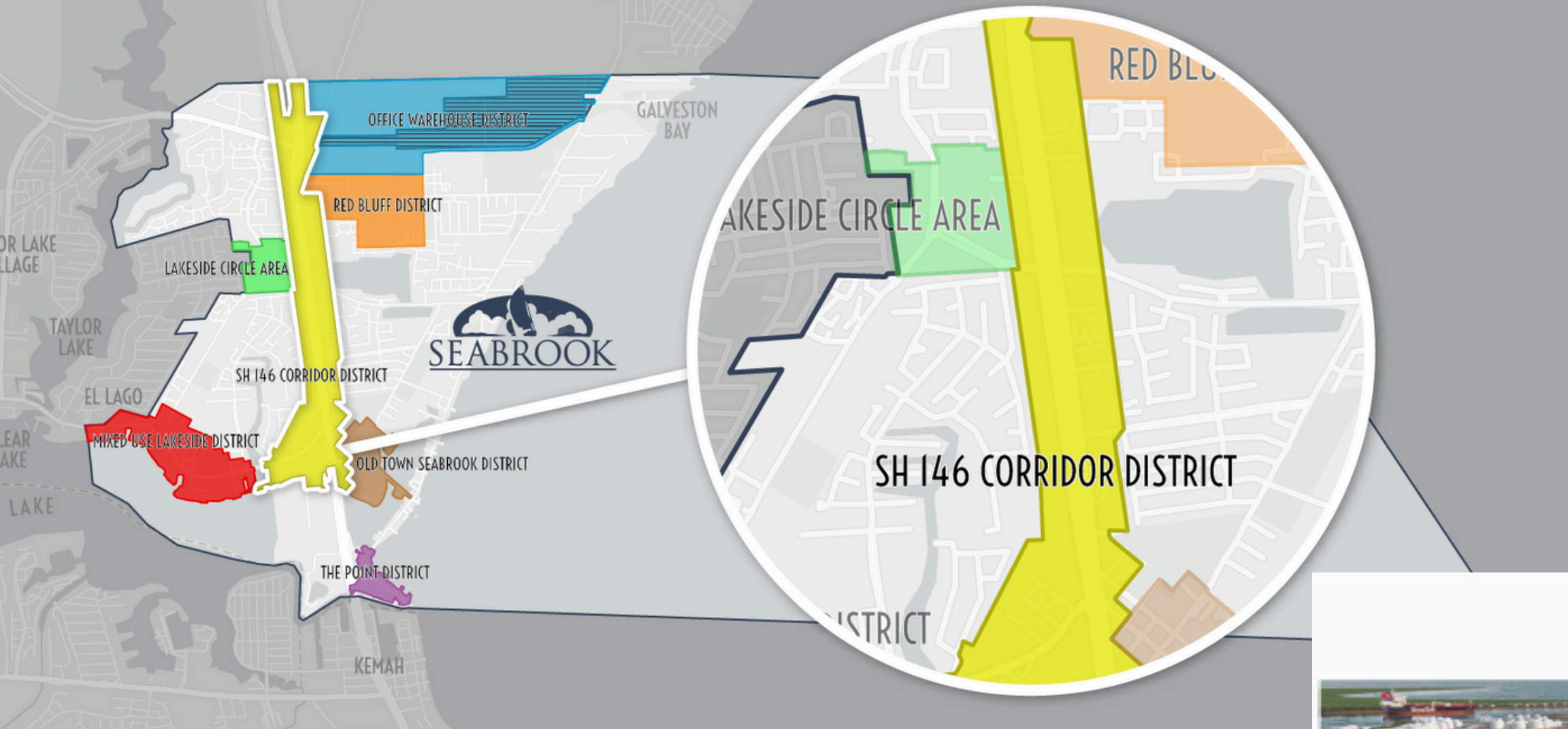
- 170 Room Hotel
- 10,000 sf + Event Center
- 76 Hotel/Condo Extended Stay
- 20,000 sf Restaurants facing Clear Lake



EDGE AT SEABROOK TOWN CENTRE



- Multi-family unit of approximately 300 units
- 56,000 square feet of Retail Space
- Large Retail/Restaurant Sites on SH 146
- Pedestrian Path Interconnect
- Public Plaza and Greenspace with Golfcart Parking Lot



View From N Highway 146 to Galveston Bay

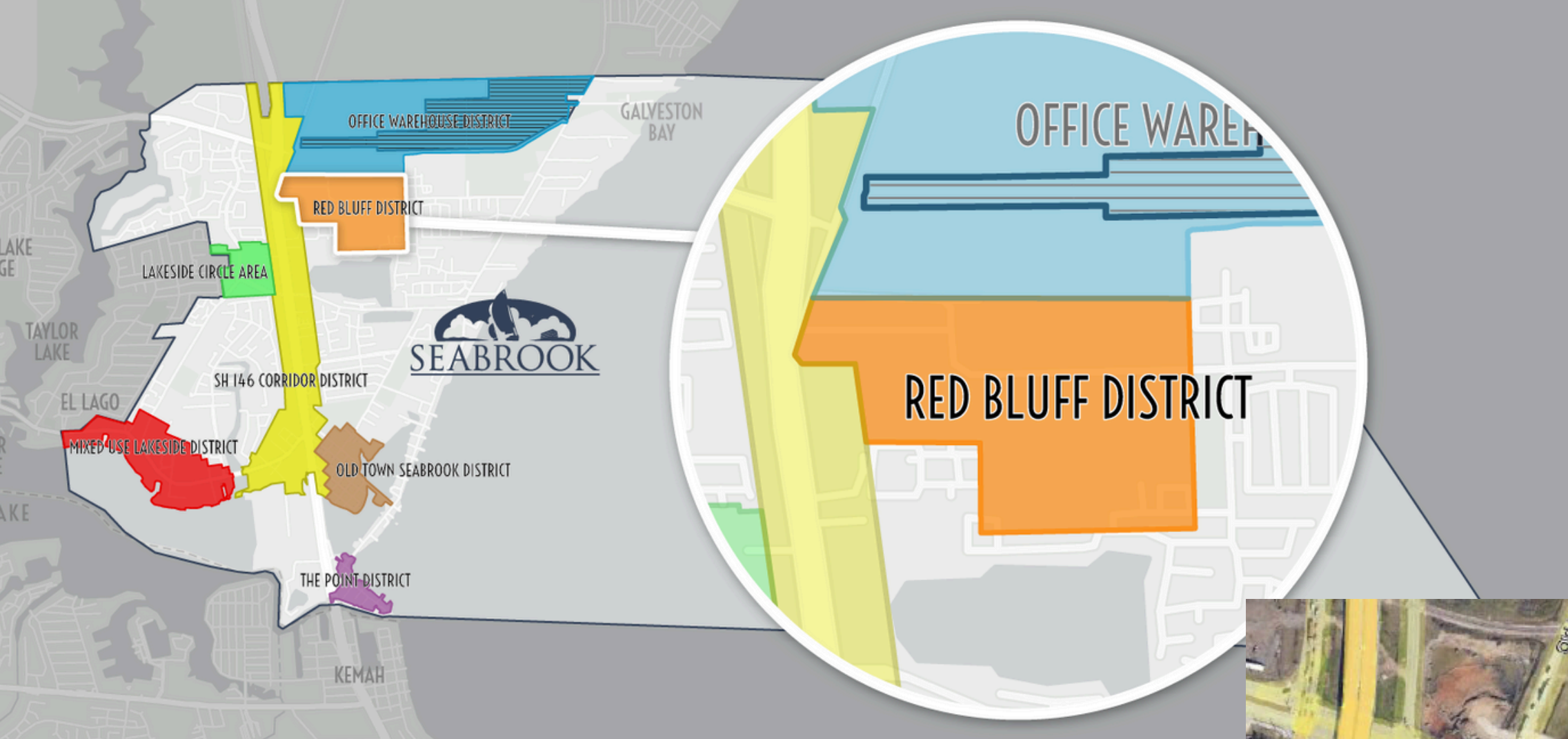


CamfieldPartners
Building Corporate Homes for Successful Businesses

PUD Amendment 1

Exhibit "D-2"

Seabrook, TX
Building Rendering



Capital Projects

ARPA PROJECTS



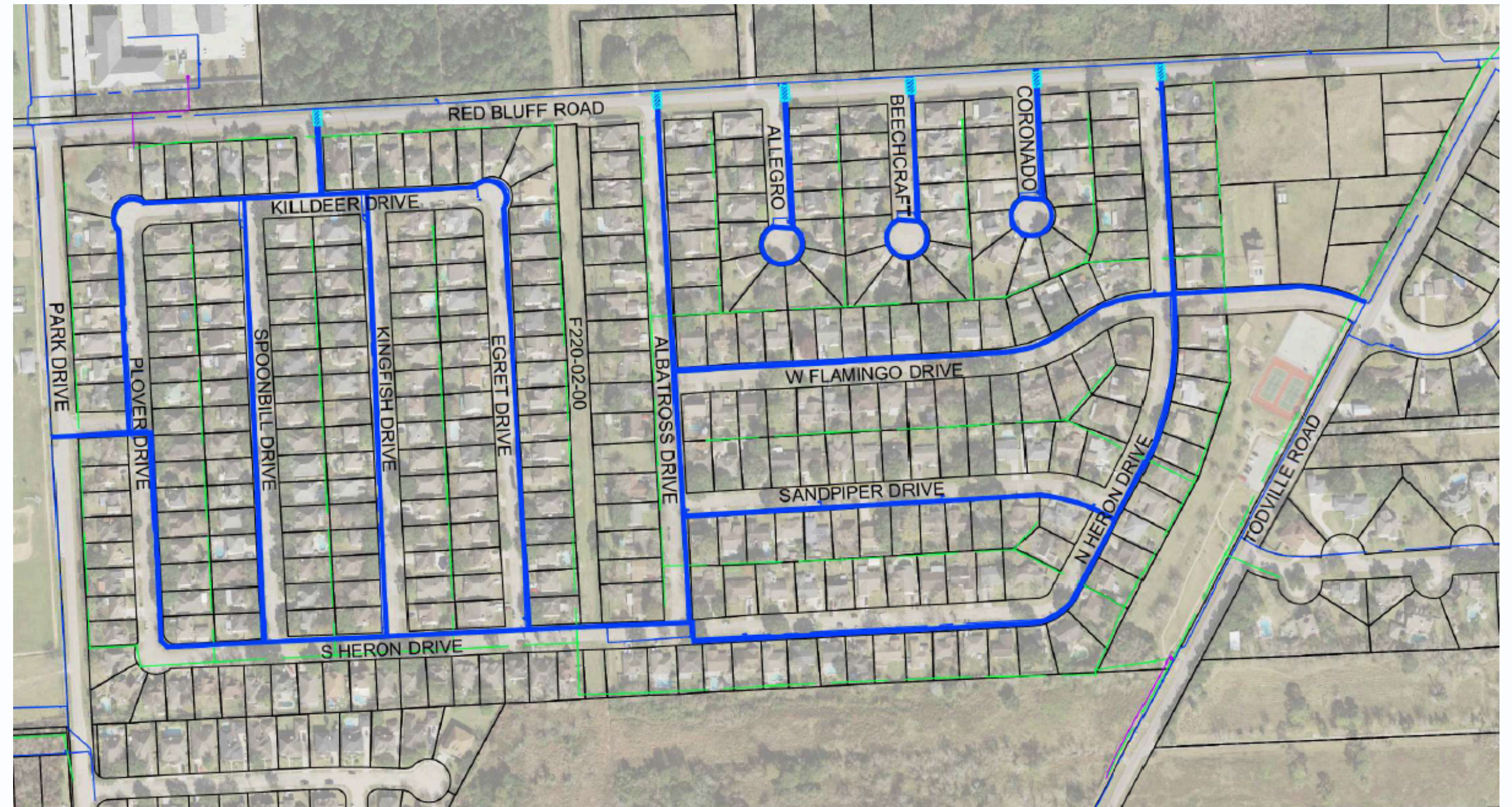
EMS FIRE STATION ADDITION AND RENOVATION - 2023 BOND PROJECT





W31 - SEASCAPE WATER LINES

- In Progress





WWTP

PINE GULLY WASTEWATER PLANT



WWTP - OLD SITE

NEW PARK UNDER DESIGN

BAYSIDE STAKEHOLDER COMMITTEE



Option A - Nature Park



Option B - Community Gathering
& Performance Park

Thank You

QUESTIONS
